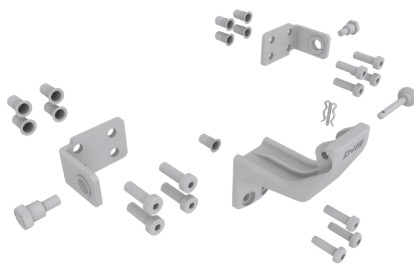
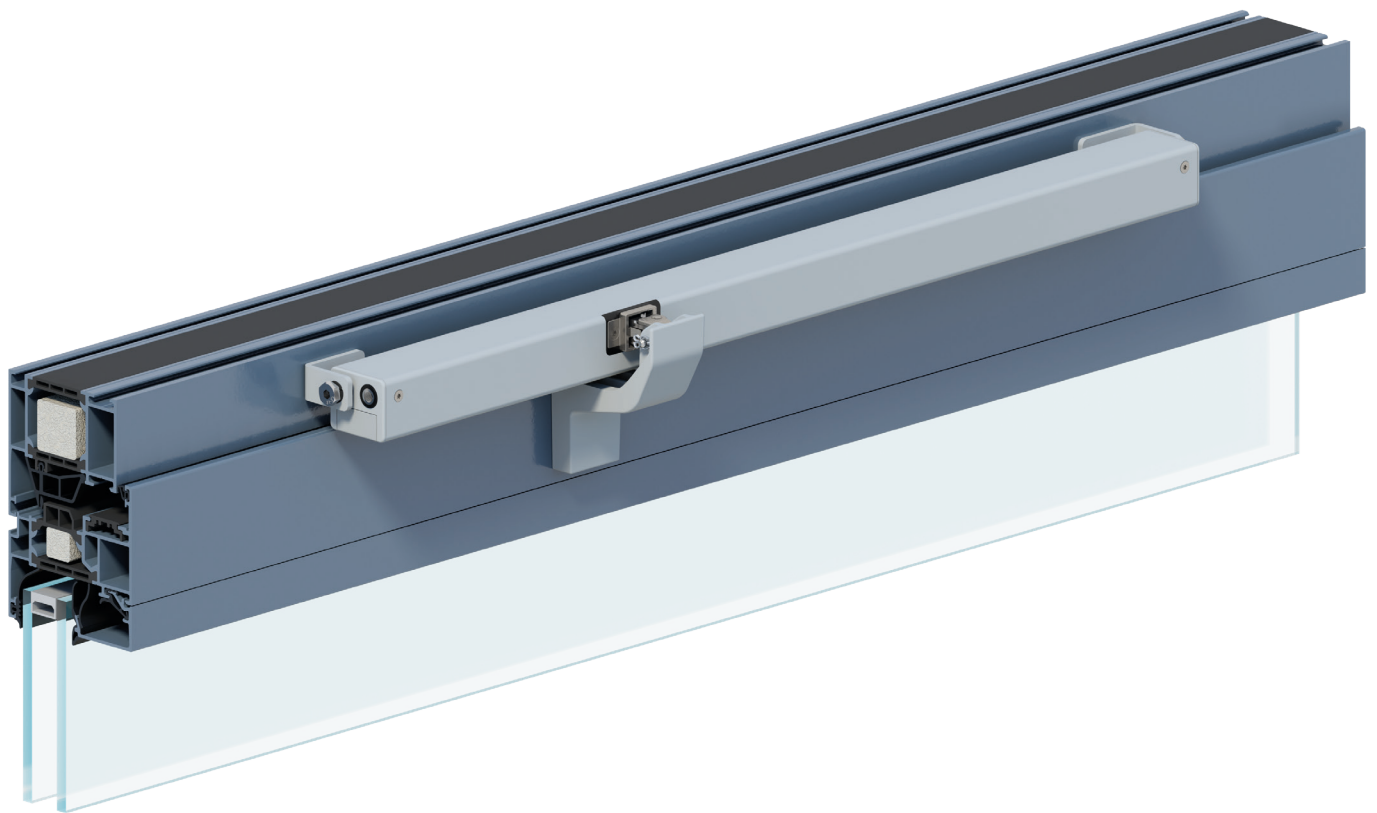
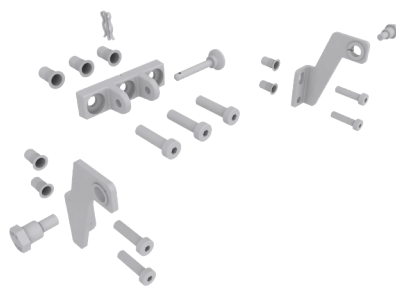


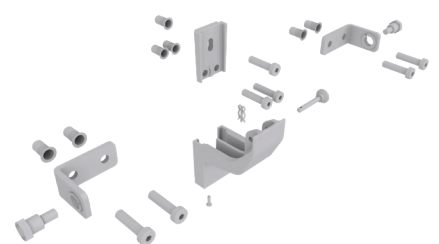
Bracket sets for CDC



CDC-BS089-VFI



BS-CDC-PA01-M-VFO



BS-CDC-PI01-M-VFI

Performance features

- » Optimal adaptation of bracket sets to the respective profile system
- » Solutions tested as complete systems for SHEV applications in accordance with EN 12101-2
- » All materials required fastening materials are included in the scope of supply of the bracket sets
- » Special colour as an option at the customer's request
- » Application drawings suitable for window and façade manufacturers available

System-specific brackets

Thanks to optimal harmonisation of the bracket sets with the most common manufacturers (see system vendors), we always have the bracket solution that works for you. Since the installation solutions from D+H offer flexibility and outstanding variety, the drives can be installed without a hitch.

System vendors

Alcoa Kawneer®	Reynaers®
Aluprof®	Sapa®
Colt®	Schüco®
Gutmann®	Skandinaviska®
Heroal®	Sykon®
Hueck®	Velux®
Raico®	Wicona®

If a suitable manufacturer is not listed for you, please contact our service regarding a solution.

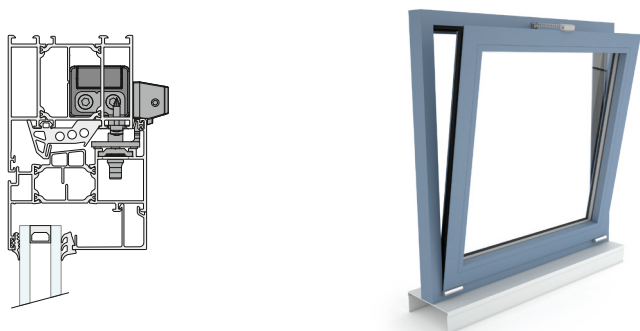
Universal brackets

We also have the right solution ready for you in the form of the universal bracket sets. Our installation solutions are suitable for numerous wood, aluminium or even modern plastic profiles. You can choose between frame mounting and sash mounting. If you have specific questions, we will be happy to offer advice and support.

Possible applications

- » Mounted installation
- » Integrated installation
- » Sash mounting
- » Frame mounting
- » Application force
- » Application tension
- » Trapezoidal application
- » Drawbridge application

Bottom-hung and side-hung windows, inward opening, integrated



Bottom-hung and side-hung window, inward opening



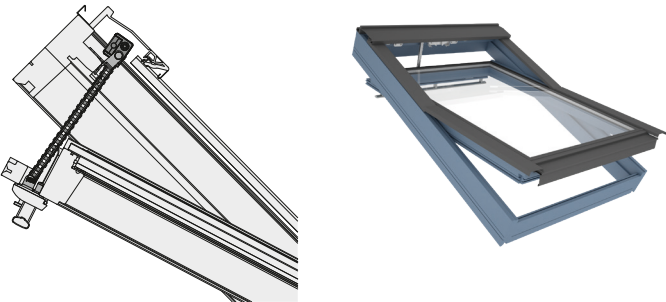
Bottom-hung and side-hung window, outward opening



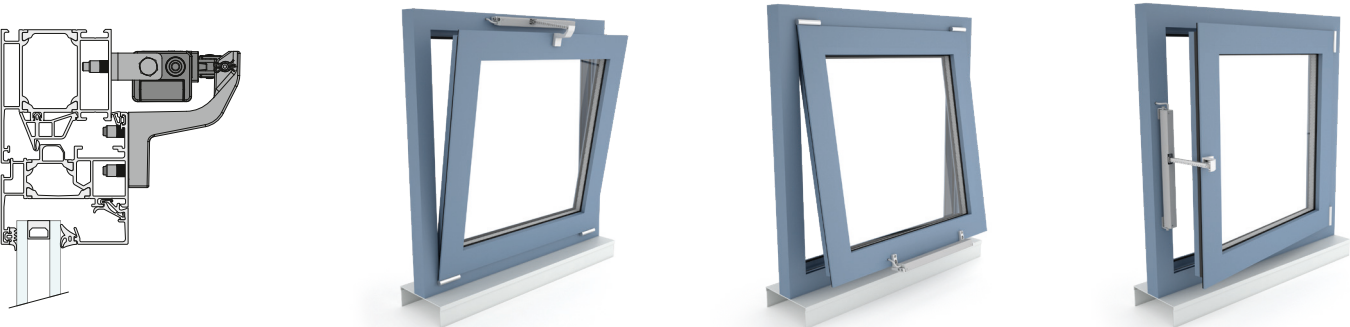
Projected top-hung, parallel opening window, outward opening



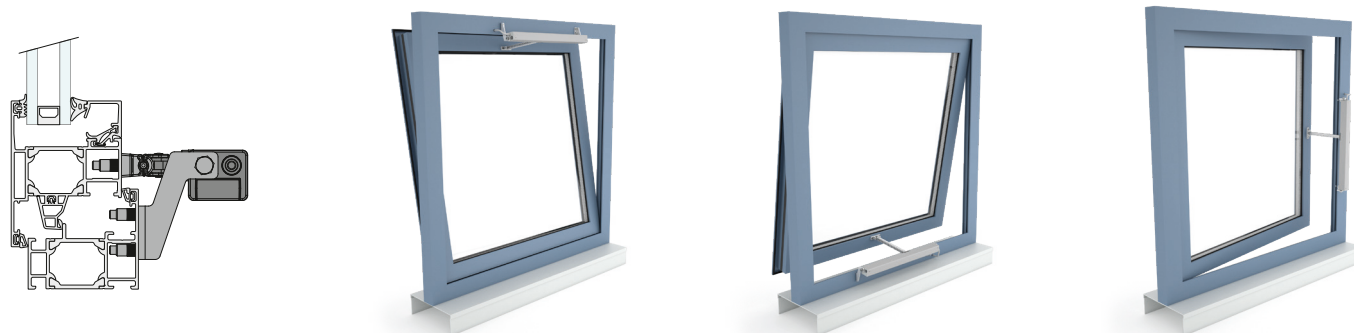
Roof windows



Universal bracket sets, inward opening



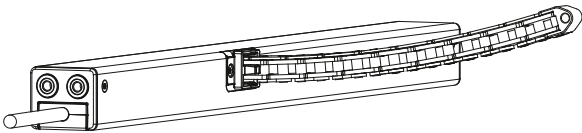
Universal bracket sets, outward opening



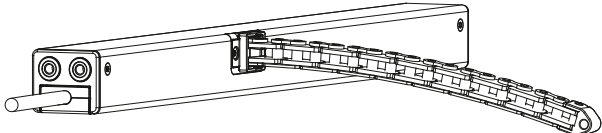
Side bow chain SBD / SBU

Drive chain with rigid backing, for non-pivoting (fixed) drives

Mounted installation

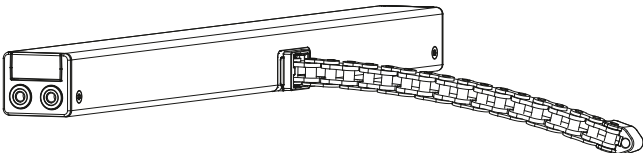


Side bow chain SBD

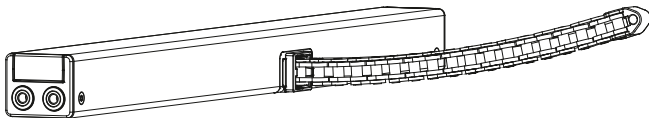


Side bow chain SBU

Integrated installation



Side bow chain SBD

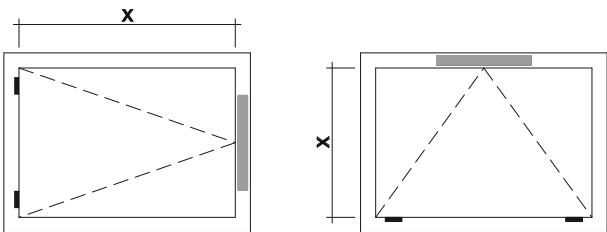


Side bow chain SBU

With the side bow chain, in addition to the normal articulated movement of the chain, you get the additional option of bending the chain sideways. This option allows you to open the window at a wider angle than with a rigid chain. However, due to this bending capability, side bow chains have a lower load capacity than standard chains.

The specifications apply to **non-pivoting** drive installation.

Standard chain

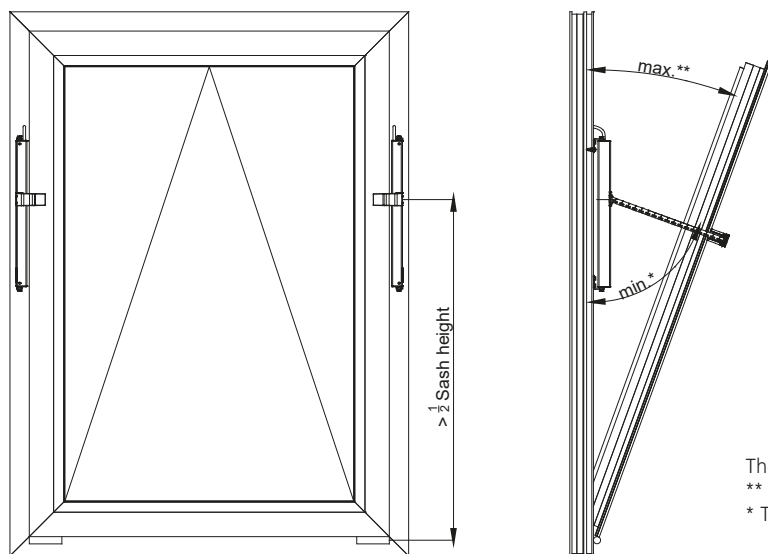


Minimum dimension (x) (mm) = stroke (mm) x 3.9

Side bow chain

Stroke	Minimum dimension (x)
350 mm	550 mm
400 mm	650 mm
500 mm	800 mm
600 mm	950 mm
800 mm	1250 mm
1000 mm	1550 mm

Drawbridge application



The drive must be mounted in the upper half of the opening sash.

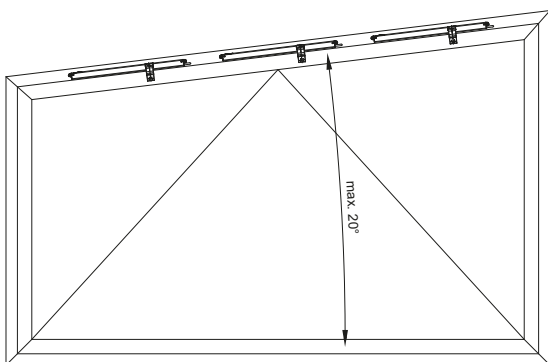
** The opening angle of the window must not exceed 60°.

* The chain angle must not be less than 60°.

- » The drawbridge application is available via "option ZB" for the CDC-0252-1-ACB (24 V DC) and CDC-0252-5-ACB (230 V AC).
- » The drive will be delivered with a special chain guide and a special configuration.
- » Do not use drives with side bow chains.
- » Do not use standard drives.
- » For installation use the bracket sets: BS-CDC-PI01-M-VFI and BS-CDC-PA01-M-VFO.

Trapezoidal application

- » While mounting the drive you have to make sure that the gearbox side is always installed towards the long window side.
- » The drive with the longest stroke within the synchronous group has to be addressed as Master.
- » Dimensions of the trapezoidal window: A window width of 2-3 m is recommended.
- » The smallest chain stroke must not be less than 50 % to the largest chain stroke.



- » The trapezoidal application is available for the CDC-0252-1-ACB and CDC-0252-5-ACB with side bow chain and a maximum stroke length of 800 mm.
- » The drives can either be mounted on or integrated into the window profile.
- » Information about the size of the drive groups for each trapezoidal window:
 - CDC-0252-1-ACB (24 V DC): 3 drive group
 - CDC-0252-5-ACB (230 V AC): 2 drive group
- » For installation use the bracket sets: BS-CDC-PI01-M-VFI, BS-CDC-PA01-M-VFO and BS-CDC-PI01-O-VSI.